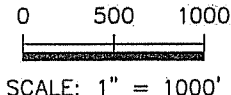
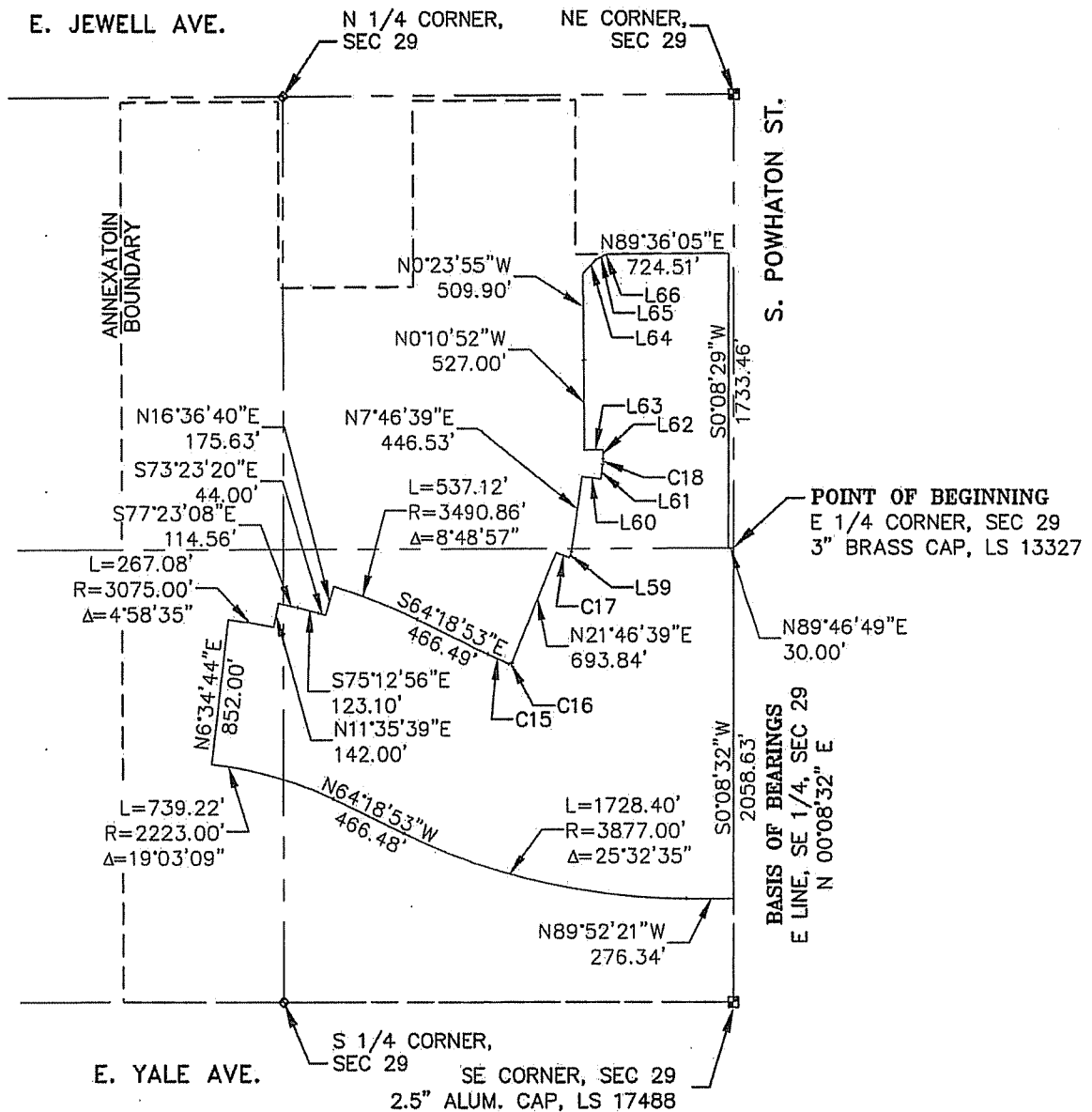


EXHIBIT A
 PART OF SECTION 29, TOWNSHIP 4 SOUTH, RANGE 65 WEST OF THE 6TH PRINCIPAL MERIDIAN,
 CITY OF AURORA, ARAPAHOE COUNTY, STATE OF COLORADO



METRO DISTRICT NAME = FLAT ROCK METROPOLITAN DISTRICT NO. 5
 LGID = 65974

PARCEL CONTAINS ±6,000,043 S.F. OR 137.74Ac, MORE OR LESS.

NOTE: THIS DOES NOT REPRESENT A MONUMENTED SURVEY.
 IT IS INTENDED ONLY TO DEPICT THE ATTACHED DESCRIPTION.

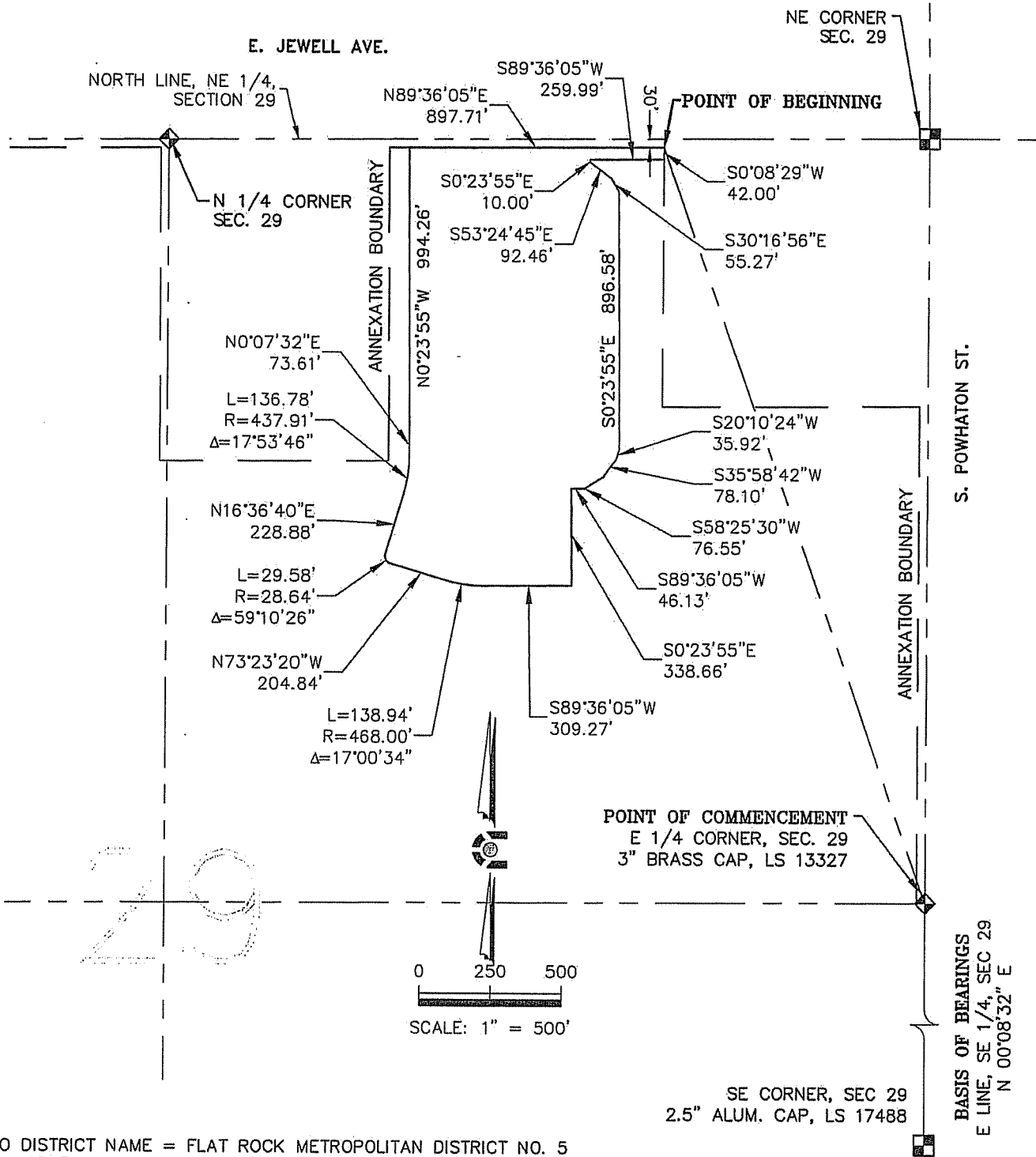
PROJECT: 14-009 DR: J. ANTON
 DATE: 12/12/14 DS: T. GIRARD
 SHEET 3 OF 4 P.M. B. CALVERT

CORE
 CONSULTANTS

CIVIL ENGINEERING
 DEVELOPMENT CONSULTING
 NATURAL RESOURCES
 LAND SURVEYING

303.703.4444
 1950 W. Littleton Blvd., Ste. 109
 Littleton, CO 80120

EXHIBIT A
 PART OF SECTION 29, TOWNSHIP 4 SOUTH, RANGE 65 WEST OF THE 6TH PRINCIPAL MERIDIAN,
 CITY OF AURORA, ARAPAHOE COUNTY, STATE OF COLORADO



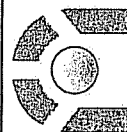
METRO DISTRICT NAME = FLAT ROCK METROPOLITAN DISTRICT NO. 5
 LGID = 65974

PARCEL CONTAINS: $\pm 1,075,453$ SQUARE FEET OR 24.689 ACRES, MORE OR LESS.

NOTE: THIS DOES NOT REPRESENT A MONUMENTED SURVEY.
 IT IS INTENDED ONLY TO DEPICT THE ATTACHED DESCRIPTION.

PROJECT: 14-009
 DATE: 12/12/14
 SHEET 2 OF 2

DR: J. ANTON
 DS: T. GIRARD
 P.M. B. CALVERT



CORE
 CONSULTANTS

CIVIL ENGINEERING
 DEVELOPMENT CONSULTING
 NATURAL RESOURCES
 LAND SURVEYING
 303.703.4444
 1930 W. Littleton Blvd., Ste. 109
 Littleton, CO 80120