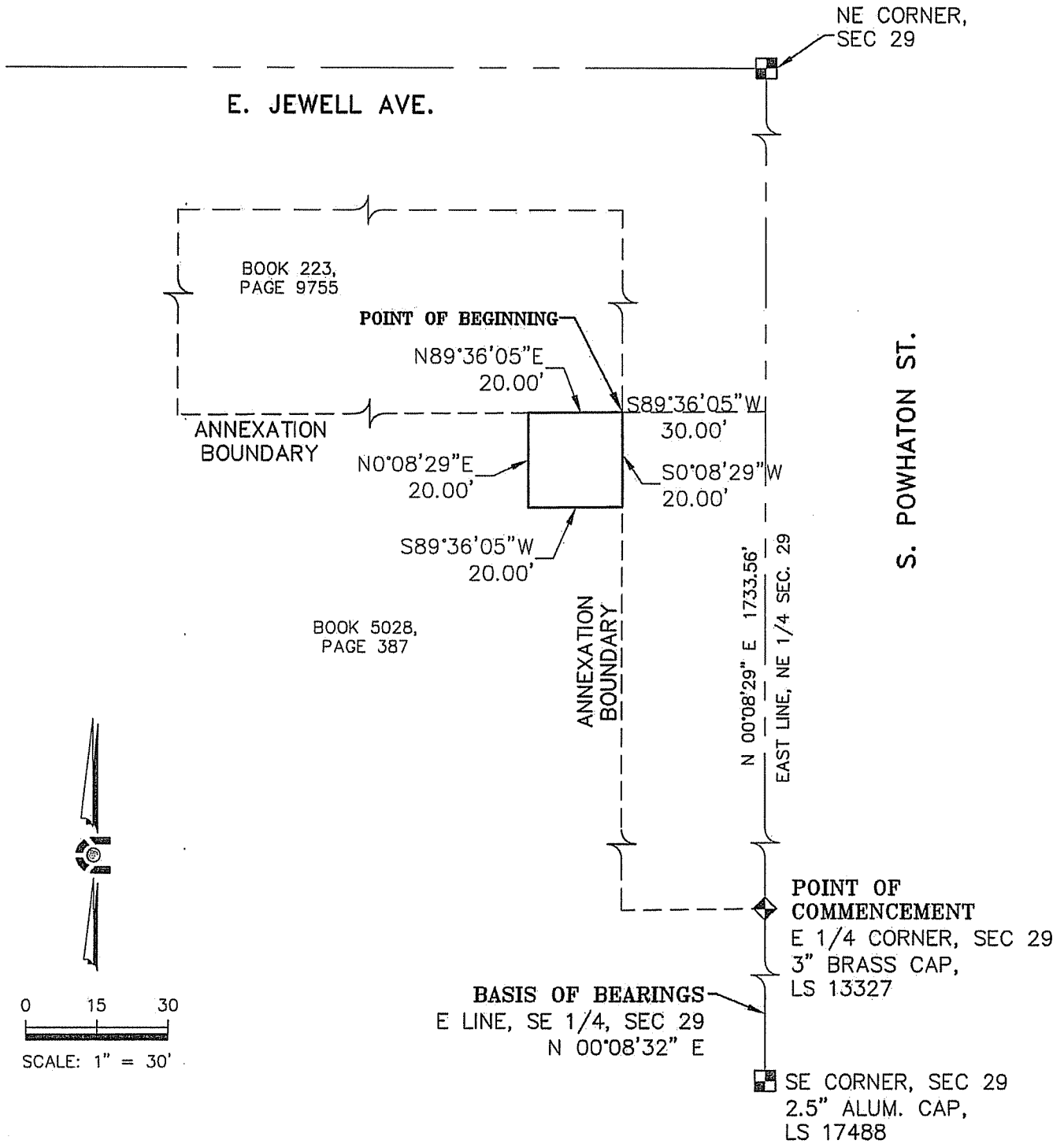


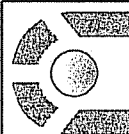
EXHIBIT A
 PART OF SECTION 29, TOWNSHIP 4 SOUTH, RANGE 65 WEST OF THE 6TH PRINCIPAL MERIDIAN,
 CITY OF AURORA, ARAPAHOE COUNTY, STATE OF COLORADO



METRO DISTRICT NAME = FLAT ROCK METROPOLITAN DISTRICT NO. 6
 LGID = 65975

PARCEL CONTAINS 400 S.F. OR 0.009Ac, MORE OR LESS.
 NOTE: THIS DOES NOT REPRESENT A MONUMENTED SURVEY.
 IT IS INTENDED ONLY TO DEPICT THE ATTACHED DESCRIPTION.
 PROJECT: 14-009
 DATE: 12/12/14
 SHEET 2 OF 2

DR: J. ANTON
 DS: T. GIRARD
 P.M. B. CALVERT



CORE
 CONSULTANTS

CIVIL ENGINEERING
 DEVELOPMENT CONSULTING
 NATURAL RESOURCES
 LAND SURVEYING
 303.703.4444
 1850 W. Littleton Blvd., Ste. 109
 Littleton, CO 80120