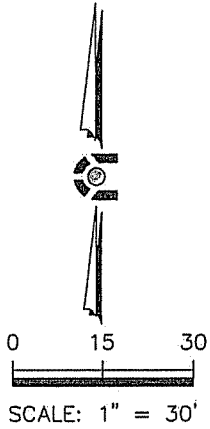
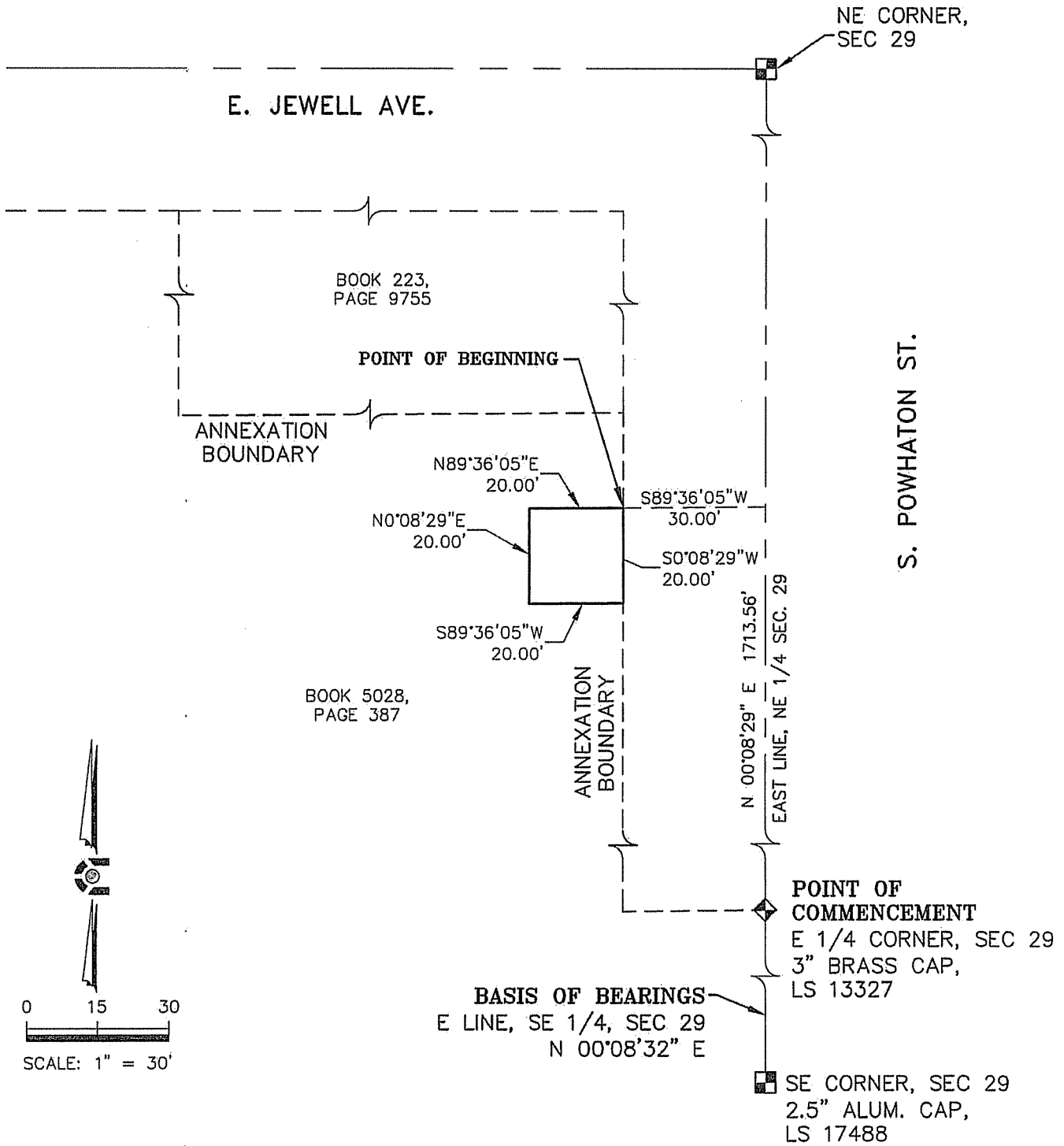


EXHIBIT A
 PART OF SECTION 29, TOWNSHIP 4 SOUTH, RANGE 65 WEST OF THE 6TH PRINCIPAL MERIDIAN,
 CITY OF AURORA, ARAPAHOE COUNTY, STATE OF COLORADO



PARCEL CONTAINS ±400 SQUARE FEET OR 0.009 ACRES, MORE OR LESS.

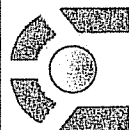
METRO DISTRICT NAME = FLAT ROCK METROPOLITAN DISTRICT NO. 7
 LGID = 65976

PARCEL CONTAINS ±400 SQUARE FEET OR 0.009 ACRES, MORE OR LESS.

NOTE: THIS DOES NOT REPRESENT A MONUMENTED SURVEY.
 IT IS INTENDED ONLY TO DEPICT THE ATTACHED DESCRIPTION.

PROJECT: 14-009
 DATE: 12/12/14
 SHEET 2 OF 2

DR: J. ANTON
 DS: T. GIRARD
 P.M. B. CALVERT



CORE
 CONSULTANTS

CIVIL ENGINEERING
 DEVELOPMENT CONSULTING
 NATURAL RESOURCES
 LAND SURVEYING
 303.703.4444
 1950 W. Littleton Blvd., Ste. 109
 Littleton, CO 80120